

Eco-Craft

Commercial

Carpet Tiles

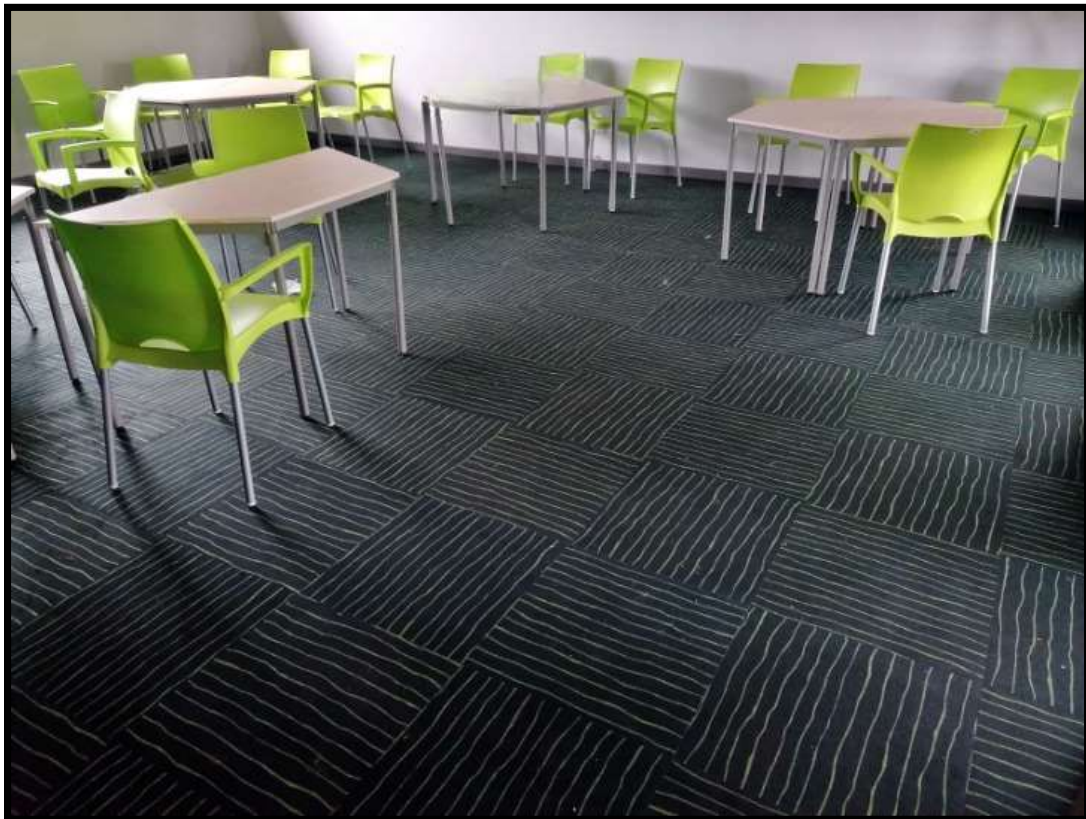


Root-Axis
Flooring Solutions

www.rootaxis.net

Eco-Craft

- ◆ Proudly manufactured in South Africa from post-consumer waste, Eco-Craft Carpet tiles are the perfect fit for any commercial office area.
- ◆ Eco-Craft carpet tiles are constructed from; 85% recycled P.E.T bottles (Top Cloth) and 100% recycled granulated rubber (Backing).
- ◆ Offering stylish 6 designs and 6 colour ways within each, printed using water based inks.



Digital print does not offer a 100% colour representation of the actual product. Please request a physical sample for the design and colour required.

Product Specification

Root-Axis	Eco-Craft
Pile Fibre	85% Recycled Polyester Fibres (PET-X Fibres)
Backing	100% Recycled Rubber (Tread Back)
Total Weight	±950gsm
Total Thickness	±3mm
Location Grade	Medium Commercial (Area Grade 4)
Fire Rating	3 (SANS10177-4)
VOC Tested	Pass (ASTM D5116)
Size	50cm x 50cm Tiles (5m ² per box/ 20 tiles)
Country of Origin	Proudly manufactured in South Africa

Average 500ml Bottle: Topcloth



±1800 Bottles = 50m²
±3600 Bottles = 100m²
±18000 Bottles = 500m²

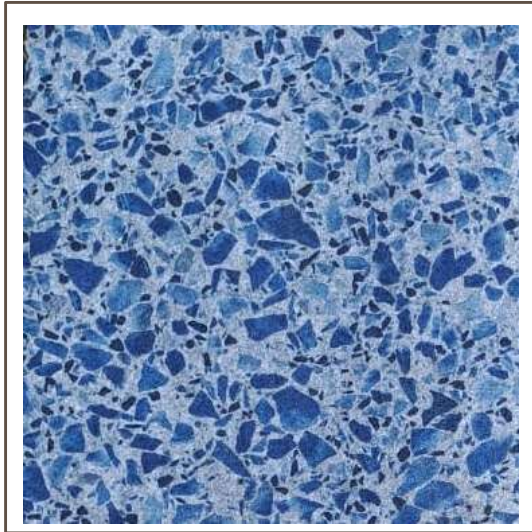
Average Passenger Tyre: Backing



±2 Tyres = 50m²
±4 Tyres = 100m²
±20 Tyres = 500m²

Ground Stone

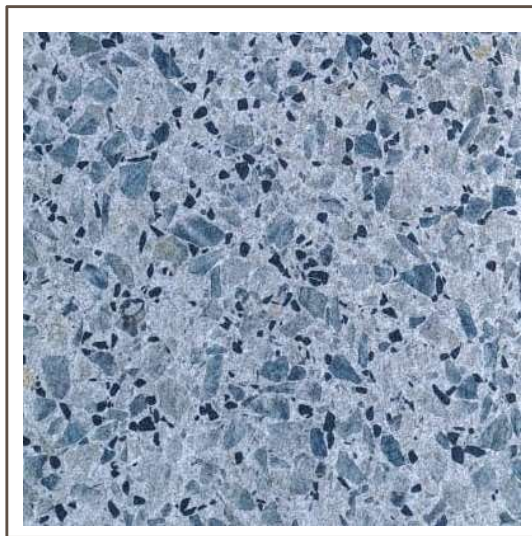
A-5



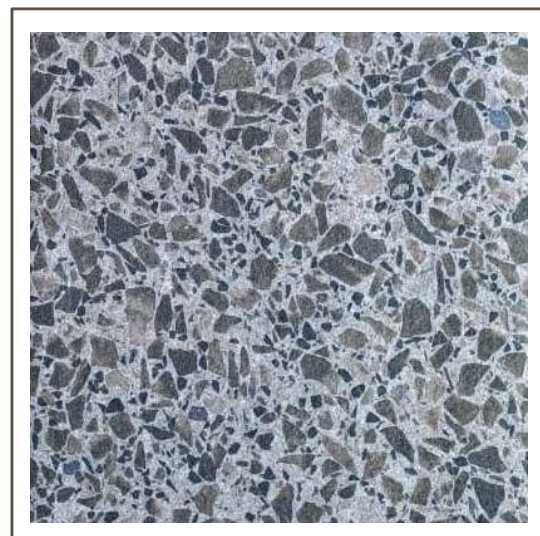
B-5



C-5



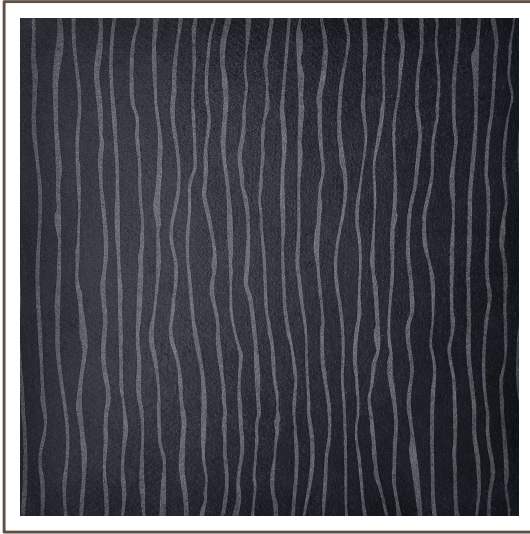
D-5



Digital print does not offer a 100% colour representation of the actual product. Please request a physical sample for the design and colour required.

Aqua Horizon

A-2



B-2



C-2



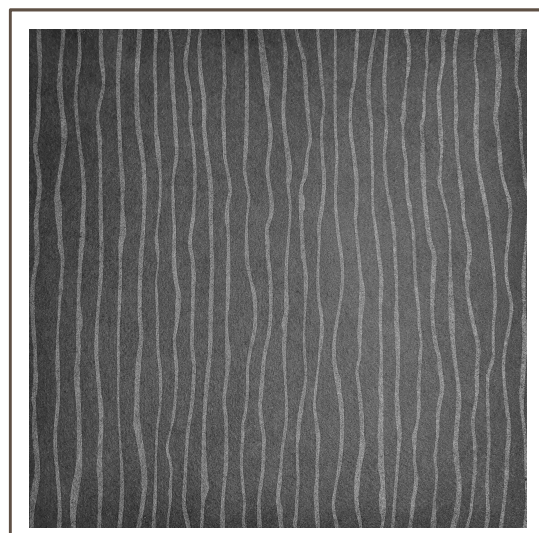
D-2



E-2



F-2



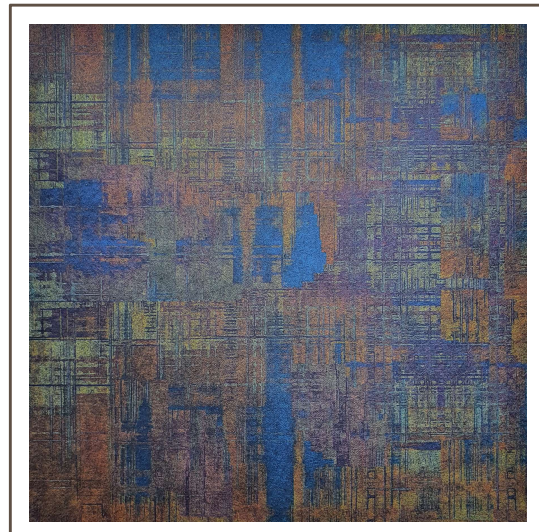
Digital print does not offer a 100% colour representation of the actual product. Please request a physical sample for the design and colour required.

Abstro

A-1



B-1



C-1



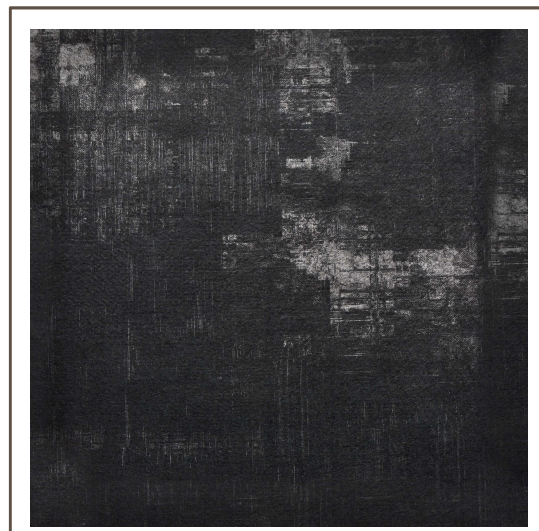
D-1



E-1



F-1



Digital print does not offer a 100% colour representation of the actual product. Please request a physical sample for the design and colour required.

Distressed

A-4



B-4



C-4



D-4



E-4



F-4



Digital print does not offer a 100% colour representation of the actual product. Please request a physical sample for the design and colour required.

Parchment

A-6



B-6



C-6



D-6



E-6



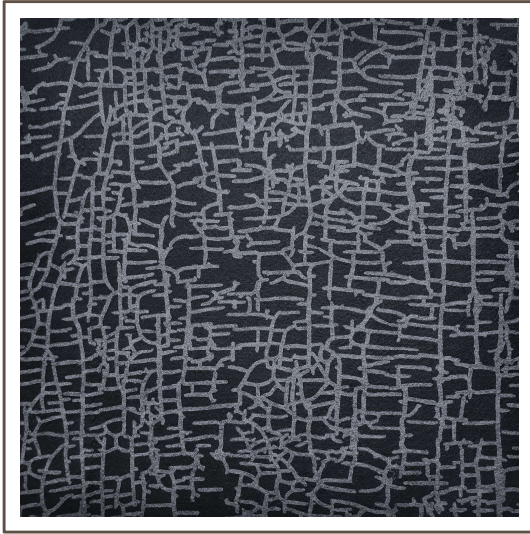
F-6



Digital print does not offer a 100% colour representation of the actual product. Please request a physical sample for the design and colour required.

Chromosome

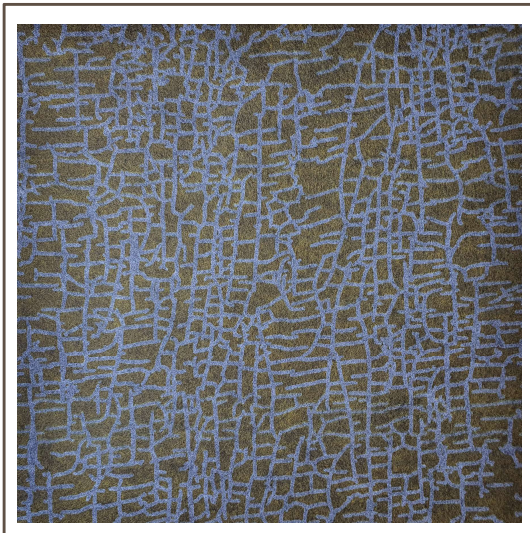
A-3



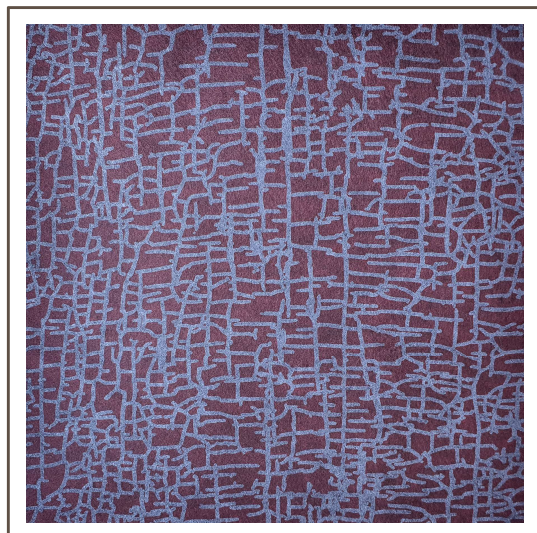
B-3



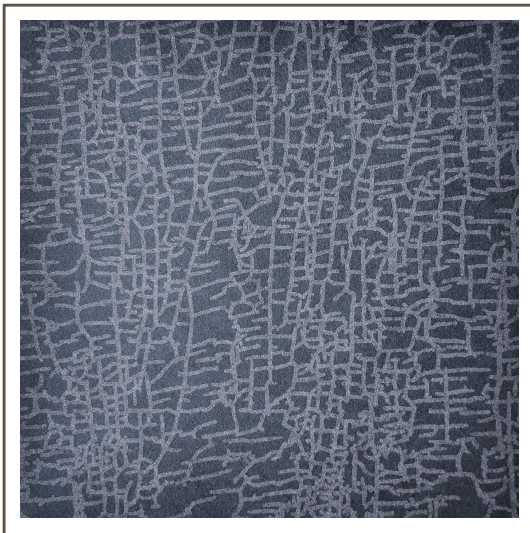
C-3



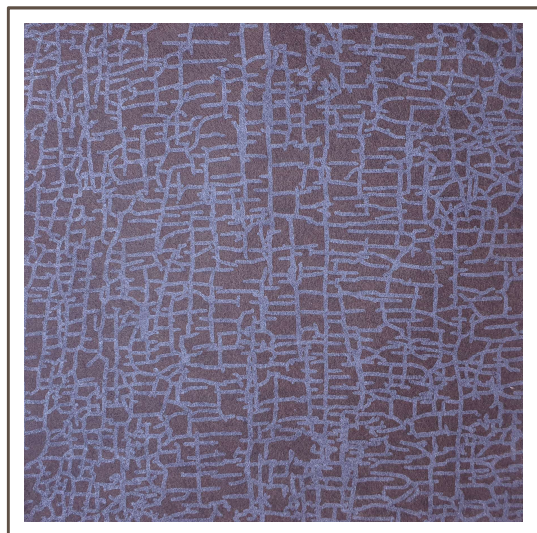
D-3



E-3



F-3



Digital print does not offer a 100% colour representation of the actual product. Please request a physical sample for the design and colour required.

Eco-Craft

- ◆ **BOQ:** Supply and fit Eco-Craft 50cm x 50cm carpet tiles by Root-Axis, manufactured from 85% Recycled Polyester fibres (PET-X Fibres) and 100% recycled rubber backing (Tread-back). Tiles to be installed tessellated and adhered to the screed using recommended adhesive. Some designs are mock-match.

Laid in accordance with SANS10186 for Textile Floor Coverings.

- ◆ **Colour/ Batch Shade Variation:** Be aware of batch/shade variations between production runs. Care needs to be taken when ordering and installing.

- ◆ **Carpet Protectors:** We recommend using Lock-On Carpet protectors under all roller castor chairs. This reduces the risk of wear and damage to floor coverings. (Full specifications for Lock-On carpet protectors available from Root-Axis)

- ◆ **5 Year Guarantee:** Maintenance linked.

- ◆ Proudly Manufactured in South Africa from post consumer waste.

Eco-Craft

Do we recycle enough?

Eco-Craft Carpet Tiles, keeps day to day waste out of our Oceans & Landfills, 1 square meter at a time!



- ✓ **Surface uses 1m² uses 36 500ml water bottles**
- ✓ **Backing uses 0,04 of an average car 50 inch tyre**

Eco-Craft

Maintain your floor coverings appearance and performance with the following:

- ◆ Use walk off mats at all entrances.
- ◆ Frequent and thorough vacuuming.
- ◆ Remove spills and marks immediately.
- ◆ Use a SETA approved cleaning company for deep cleans.
- ◆ Appropriate UV protection must be taken against products being installed in direct sunlight to prevent premature fading or damage.

- ◆ Note: Premature wear or damage due to incorrect maintenance is not considered a manufacturing defect. A full guide for maintenance is available on request.

Eco-Craft Tiles by Root-Axis

For more information or Request a sample Contact:

Root-axis@outlook.com

072 6877534 / 063 847 6577

www.rootaxis.net